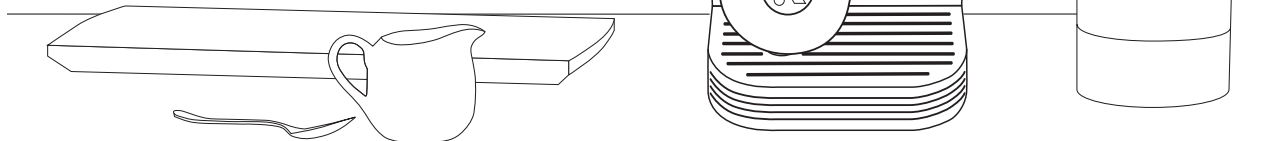


KEURIG®

Let's get brewing.

K•Express Essentials® Plus
SINGLE SERVE COFFEE MAKER

Quick Start Guide



GET TO KNOW YOUR K•Express Essentials® Plus

Scan here to watch step-by-step instructions for how to set up your brewer or continue reading.



IMPORTANT SAFEGUARDS

When using electrical appliances, basic safety precautions should always be followed, including the following:

1. READ ALL INSTRUCTIONS.
2. For household use only.
3. Do not use distilled water.
4. Scalding may occur if the handle is opened during the brewing process.
5. Do not touch hot surfaces. Use handles or knobs.
6. To protect against fire, electric shock, and injury to persons, do not immerse appliance, cord, or plugs in water or other liquid.
7. This appliance is not intended for use by persons (including children) with reduced physical, sensory, or mental capabilities or lack of experience and knowledge unless they have been given supervision or instruction concerning use of the appliance by a person responsible for their safety. Close supervision is necessary when any appliance is used by or near children. Children should be supervised to ensure that they do not play with the appliance.
8. Unplug from outlet when not in use and before cleaning. Allow to cool before putting on or taking off parts and before cleaning the appliance.
9. Do not operate any appliance with a damaged cord or plug or after the appliance malfunctions or has been damaged in any manner. Return appliance to the nearest authorized service facility for examination, repair, or adjustment.
10. The use of accessory attachments not authorized by the appliance manufacturer may result in fire, electric shock, or injury to persons.
11. Do not use outdoors.
12. Do not let cord hang over edge of table or counter or touch hot surfaces.
13. Do not place on or near a hot gas or electric burner or in a heated oven.
14. Always attach plug to appliance first (if not permanently attached), then plug cord into the wall outlet. To disconnect, turn any control to "off," then remove plug from wall outlet.
15. Do not use appliance for other than intended use.
16. Use brewer in upright position only.
17. Only use K-Cup® pods intended for this appliance. If the pod does not fit, do not force it into the appliance.
18. Avoid spilling any liquid substances on powered connectors.
19. Do not remove the water reservoir or lift the handle once the **BREW** button has been pressed until the brew has completed.

For detailed brewer cleaning and maintenance instructions, videos, and the full Use & Care Guide, visit support.Keurig.com.



1. **WARNING:** Keep all plastic bags away from children.
2. **CAUTION:** Keurig recommends using only Keurig® My K-Cup® Reusable Filters and Keurig® approved K-Cup® pods in this appliance. If the pod does not fit, do not force the pod into the appliance. The use of non-Keurig® pods or accessories may cause brewer malfunction or injury.
3. **WARNING:** Used K-Cup® pods should be removed from the pod holder, and the drip tray and water reservoir (if applicable) should be rinsed clean regularly or as part of the daily cleaning routine.
4. **WARNING:** There is extremely hot water under pressure in the K-Cup® pod holder during the brew process. To avoid risk of injury, do not lift the handle or otherwise open the handle during the brew process.
5. **CAUTION:** There are sharp needles that puncture the K-Cup® pod above the K-Cup® pod holder and in the bottom of the K-Cup® pod holder. To avoid risk of injury, be aware of the needle locations.
6. **WARNING:** This appliance has a polarized plug (one blade is wider than the other); it is intended to fit into a polarized outlet only one way to reduce the risk of electric shock. If the plug does not fit fully into the outlet, reverse the plug. If it still does not fit, contact a qualified electrician. Do not attempt to modify the plug in any way.
7. **POWER CORD INSTRUCTIONS:**
 - a. A short power-supply cord is provided to reduce risks resulting from becoming entangled in or tripping over a longer cord.
 - b. Longer detachable power-supply cords or

extension cords are available and may be used if care is exercised in their use.

c. If a long detachable power-supply cord or extension cord is used:

- i. The marked electrical rating of the detachable power-supply cord or extension cord should be at least as great as the electrical rating of the appliance.
- ii. If the appliance is of the grounded type, the extension cord should be a grounding type 3-wire cord.
- iii. The longer cord should be arranged so that it will not drape over the countertop or tabletop, where it can be pulled on by children or tripped over.

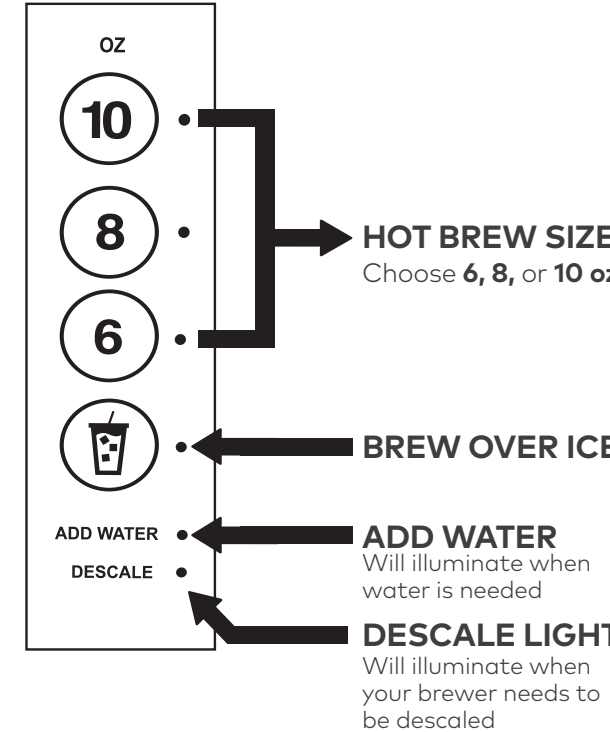
8. **CAUTION: HOT COCOA/OTHER NON-COFFEE PODS:** Immediately after using a hot cocoa/other non-coffee pod, run a hot water brew cycle without a pod to avoid the possibility of clogging the exit needle. DO NOT assume the next user will do this.

SAVE THESE INSTRUCTIONS

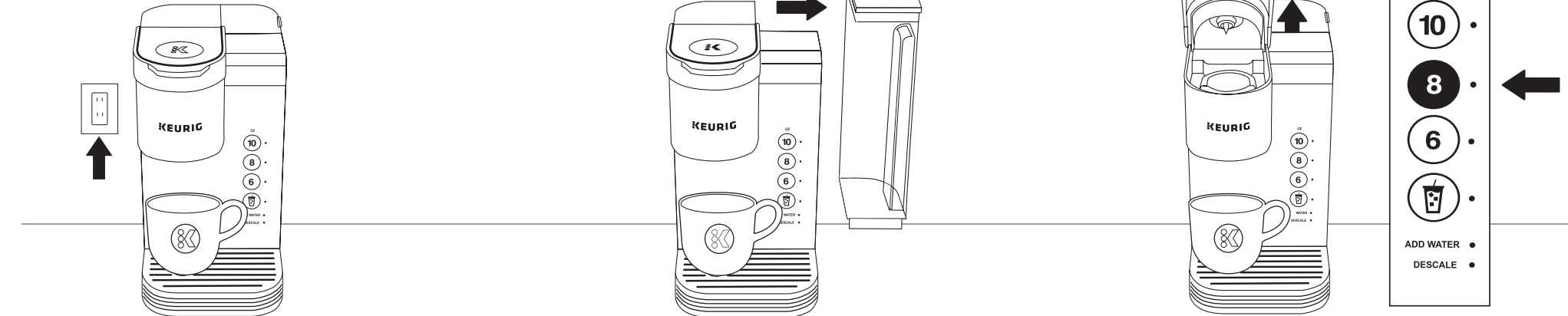


WARNING, TO REDUCE THE RISK OF FIRE OR ELECTRIC SHOCK, DO NOT REMOVE COVER (OR BACK) NO USER SERVICEABLE PARTS INSIDE

Button Overview



Before You Brew



1 Plug & Place

Remove packing tape from brewer. Plug into an outlet.

Place a large mug (10 oz minimum) on the drip tray.

2 Rinse & Fill

Remove the water reservoir lid, then lift the reservoir straight up to remove it. If you have a Keurig® Water Filter (sold separately), install it now. Refer to your Water Filter Starter Kit for instructions.

Rinse reservoir with fresh water and fill to the **MAX FILL** line.

Replace water reservoir, making sure the tank is seated properly in the base. Replace lid.

NOTE: Do not use distilled water.

3 Lift & Lower

Lift and lower the handle. **Do not insert a K-Cup® pod.** The brewer will power on automatically.

4 Cleansing Brew

The 3 cup sizes will blink. Press the **8 oz** button to start a cleansing brew. Pour the hot water into the sink.

Do not remove the water reservoir or lift the handle once the BREW button has been pressed until the brew has completed. The one-time setup process is now complete and you are ready to brew!

SGK is a Matthews International Corporation

Client Name: Keurig Green Mountain
Sales Order: 121068420
Service Order: 403947748
Date: 12-23-2024
Description: K-Express Essentials Plus QSG-QSG

KGM Job #: 24-5442
Item Part #: AW0000001099 REV A
Buyer: LingZhang
Vendor: SB
Designer: CC:
Operator: SB
Project:

Barcode:
Mag:
Bar Width Adj.:
Dieline #: ST0000000257 REV A
Line Screen: 175
Print Method:
Printer: Yamagata (Thailand) Co., Ltd. -
Printer PO #: Samutprakarn
Special Print Processes:

KGM Approval: Designer Approval: Buyer Approval: Proofreader Approval: Changes:

To Brew Over Ice



1 Place Tumbler & Pod

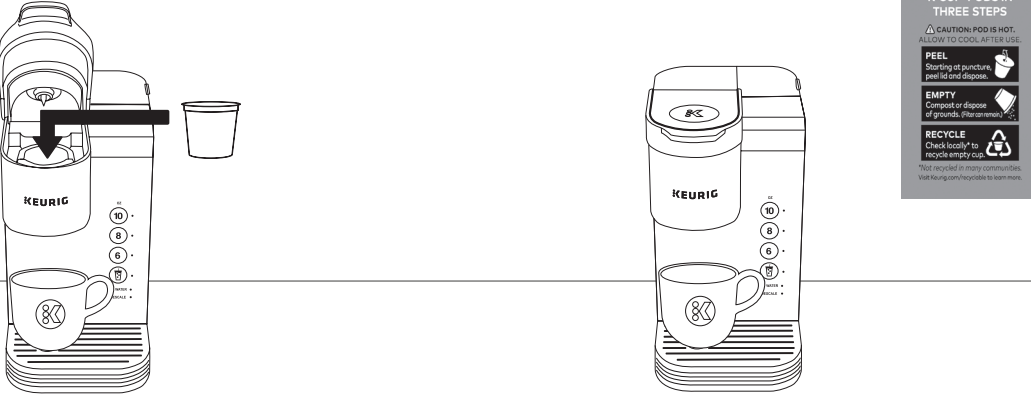
Fill tumbler with ice (DO NOT USE GLASS) and place on the drip tray (for more height, remove drip tray). Lift the handle and place a K-Cup® pod in the K-Cup® pod holder. Lower the handle completely to close the lid.

CAUTION: While brewing, there is extremely hot water in the K-Cup® pod holder. To avoid injury, do not lift the handle during the brewing process. Do not brew into glass.
NOTE: For best results, we recommend one-time use with our K-Cup® pods. A twice-brewed pod won't provide full flavor, and if the pod holder isn't lined up with the original holes, it can cause an overflow of water and coffee grounds.

2 Brew & Enjoy!

Press the **BREW OVER ICE** button. The **BREW OVER ICE** light will remain illuminated while brewing. Brewing is complete when all sizes are illuminated. Lift the handle and recycle the K-Cup® pod (see instructions above).

To Brew Hot



1 Place Mug & Pod

Place a mug on the drip tray. Lift the handle and place a K-Cup® pod in the K-Cup® pod holder. Lower the handle completely to close the lid.

CAUTION: While brewing, there is extremely hot water in the K-Cup® pod holder. To avoid injury, do not lift the handle during the brewing process.
NOTE: For best results, we recommend one-time use with our K-Cup® pods. A twice-brewed pod won't provide full flavor, and if the pod holder isn't lined up with the original holes, it can cause an overflow of water and coffee grounds.

2 Brew & Enjoy!

The 3 brew sizes will blink. Select and press your brew size. The light will remain illuminated while brewing. Brewing is complete when the sizes are all illuminated. Lift the handle and recycle the K-Cup® pod (see instructions above).

Brewer Features

FAST & FRESH-BREWED: Coffee made in minutes.

BREW OVER ICE: Brew a refreshing iced coffee in minutes. The **BREW OVER ICE** feature automatically adjusts brew temperature — starting hotter to help extract full flavor, then cooling down for less ice melt.

BACK-TO-BACK BREWING: Immediately brew a second cup; no need to wait for reheating.

TRAVEL MUG FRIENDLY: Accommodates travel mugs up to 7" tall.

SIMPLE BUTTON CONTROLS: Just insert any K-Cup® pod and use the button controls to brew a delicious cup.

MAINTENANCE ALERT: Reminds you to descale after every 250 brews.

COMPATIBLE WITH THE MY K-CUP® REUSABLE COFFEE FILTER: Brew your own ground coffee (sold separately).

AUTO OFF: Automatically turns your brewer off 5 minutes after the last brew for energy savings, but will be ready to brew as soon as it is powered on again.

HIGH ALTITUDE: To ensure your coffee maker works properly at higher altitudes (5,000 feet), please enable the High Altitude Brewing Mode on your coffee maker.

1. Begin with the brewer plugged in and powered off.

2. Press and hold the **BREW OVER ICE** button and **8 oz** button for 3 seconds. The **10 oz** button will illuminate to confirm that the High Altitude Brewing Mode has been enabled.

3. High Altitude Mode will remain enabled until steps 1-2 are repeated and the **10 oz** light turns off and the **8 oz** light turns on to confirm that the High Altitude Brewing Mode is disabled.

HIGH ALTITUDE BREWING: While holding the brewer handle up, push down slowly on the K-Cup® pod in the pod holder until the bottom of the K-Cup® pod is punctured by the exit needle.

Caring For Your Brewer

Descaling Your Brewer: Keurig® brewer performance matters. Descaling regularly removes mineral buildup that can affect taste and quality, ensuring your Keurig® brewer brews a perfect cup every time. In order for the **DESCALE** light to turn off, you must enter **DESCALE MODE** on the brewer. To enter **DESCALE MODE**, press and hold the **6 oz** and **10 oz** buttons together for 3 seconds. For more information on the descaling procedure, go to keurig.com/descale.

Frequency	Product	Benefit
Weekly	Keurig® Rinse Pods	Weekly cleaning with Keurig® Rinse Pods helps reduce flavor carryover between brews
Every 2 months	Keurig® Water Filters	Keep your water fresh and help remove impurities
Every 3 months or when the Descale notification turns on	Keurig® Descaling Solution	Eliminate mineral buildup to enhance the taste of your coffee and preserve the long-term health and performance of your coffee maker

*To turn off Descale notification, follow the full descaling procedure as outlined in this guide and the Use & Care Guide at support.keurig.com.

If the brewer has been in storage or hasn't been used in days, run a cleansing brew before brewing your beverage.

At least weekly, **hand-wash** the water reservoir and lid and drip tray with warm, soapy water and rinse clean.

CAUTION: Parts are not dishwasher safe.

NOTE: Do not dry the inside of the water reservoir with a cloth, as lint may remain.

For detailed brewer cleaning and descaling instructions, videos, and the full Use & Care Guide, visit support.keurig.com.

Descaling Procedure

NOTE: The full descaling procedure must be completed to turn off the **DESCALE** light.

Descaling Procedure

Before you begin, you will need a large ceramic mug (14 oz minimum), fresh water, Keurig® Descaling Solution, and access to a sink. Do not use a paper cup. Ensure that there is no beverage pod in the K-Cup® pod holder. The descaling procedure takes approximately 10-15 minutes. Empty the water from the water reservoir. If using a Keurig® Water Filter, remove and set aside.

STEP 1: Prepare the Brewer

Pour the entire bottle of Keurig® Descaling Solution into an empty water reservoir. Then fill the empty bottle with water and pour into the water reservoir. Do not insert a K-Cup® pod. Place a large mug on the drip tray. Keep empty descale bottle for STEP 3 below.

STEP 2: Descale the Brewer

To activate **DESCALE MODE**, begin with the coffee maker plugged in and powered off, then press and hold the **6 oz** and **10 oz** buttons together for 3 seconds. When flashing, press the **8 oz** button to start the descaling process. Once the brew is complete, pour the hot liquid into the sink. Repeat this step two to three more times until the **ADD WATER** light illuminates.

STEP 3: Fresh Water Rinse

Empty and rinse the water reservoir. Take the empty descale bottle, fill it with water, and pour the water into the reservoir. Do this once more, so the water reservoir has 28 ounces of water (two bottles' worth). When flashing, press the **8 oz** button to start the rinsing process. Once the brew is complete, pour the liquid into the sink. Repeat this step two to three more times until the Descale notification turns off. The coffee maker has now exited **DESCALE MODE** and will be ready for use!

NOTE: Liquid dispensed in the fresh water rinse may be room temperature.

Coffeehouse taste
in your own home.

FIND YOUR PERFECT POD

With over 75 brands and hundreds
of varieties, find your match at
keurig.com/new

Have questions? We're here to help. Visit support.keurig.com for troubleshooting videos, maintenance recommendations, and the full Use & Care Guide.

Still need help? Give us a call at 1-866-901-BREW (2739).



1620 Tech Avenue, Mississauga, ON
L4W 5P4 Canada
www.sgkinco.com
905.219.1600

SGK is a Matthews International Corporation

Please check carefully before using. Although every effort is made to produce the finest possible product, errors do occur.
We do not assume any liability beyond the replacement of our product.

Client Name: Keurig Green Mountain
Sales Order: 121068420
Service Order: 403947748
Date: 12-23-2024
Description: K-Express Essentials Plus QSG-QSG

KGM Job #: 24-5442
Item Part #: AW0000001099 REV A
Buyer: LingZhang
Vendor:
Designer:
CC:
Operator: SB
Project:

Barcode:
Mag:
Bar Width Adj.:
Dieline #: ST0000000257 REV A
Line Screen: 175
Print Method:
Printer: Yamagata (Thailand) Co., Ltd. -
Printer PO #: Samutprakarn
Special Print Processes:

KGM Approval:	Designer Approval:	Buyer Approval:	Proofreader Approval:	Changes:
Date	Date	Date	Date	Date