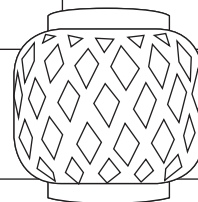
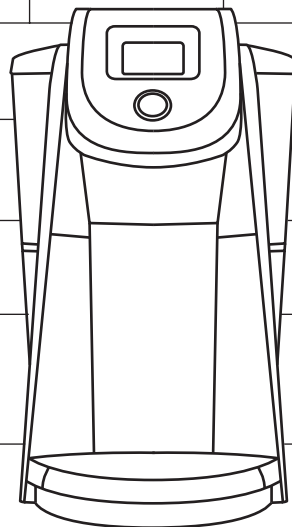


**KEURIG®**

# K200 Series

## Use & Care Guide

Get the most from your  
new Keurig® brewer.



# K200 Series Brewer

**A.** Water Reservoir Lid

**B.** Water Reservoir

**C.** Top Housing

**D.** Touch Screen/Power Button

**E.** Brew Button

**F.** Handle

**G.** Brew Head

**H.** Power Cord

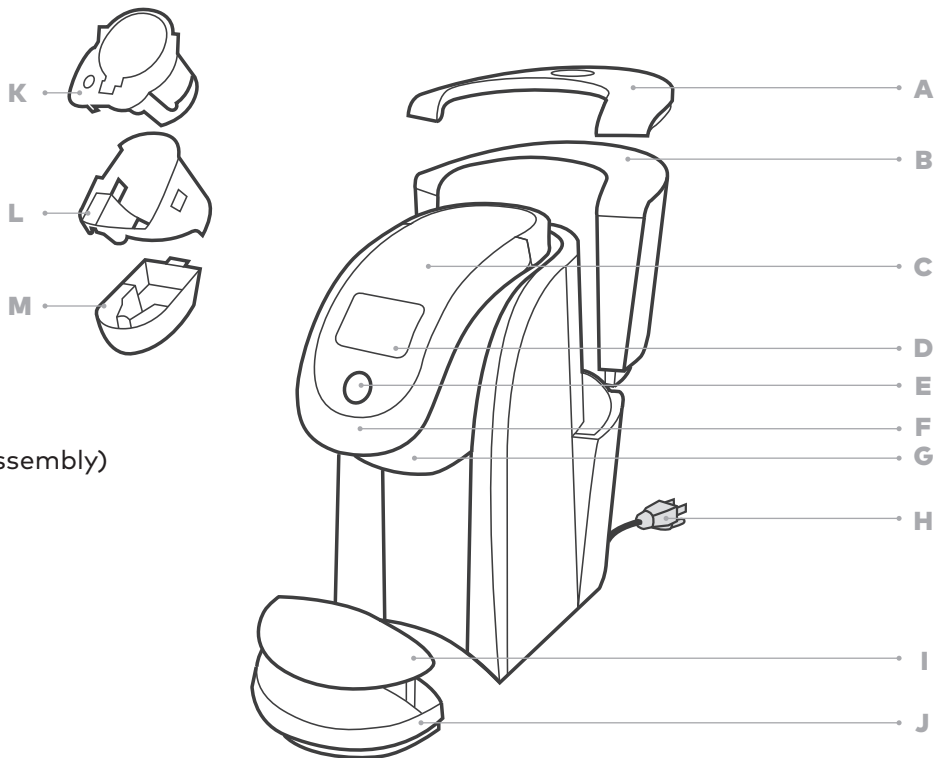
**I.** Drip Tray Plate

**J.** Drip Tray

**K.** Pod Holder

**L.** Housing (K and L are the Pod Holder Assembly)

**M.** Base

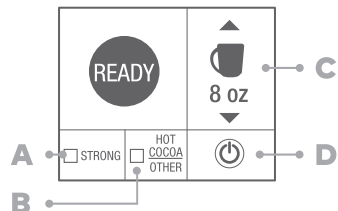


# Settings and Touch Screen Controls



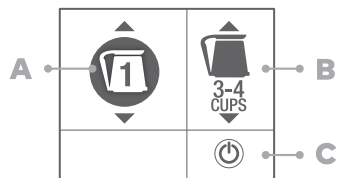
## Home Screen

- A. Settings Button
- B. Power Button



## Screen for K-Cup® Pods

- A. **STRONG** (only available for coffee)
- B. **HOT COCOA/OTHER** (for select non-coffee beverages)
- C. Brew Size
- D. Power Button



## Screen for K-Carafe® Pods

- A. **KEURIG BREW** Setting 1
- B. Brew Size
- C. Power Button

## Brew Settings

Select the **KEURIG BREW** setting that matches the number on the pod lid for K-Mug® and K-Carafe® pods.

SELECT BREW SETTINGS	READY	K-CUP® POD: SIZE OPTIONS		4 oz.	6 oz.	8 oz.*	10 oz.
	1	K-CARAFE® POD: SIZE OPTIONS		2-3 cups	3-4 cups*	4-5 cups	
	2	K-MUG® POD: SIZE OPTIONS		12 oz.	14 oz.*	16 oz.	
	3			12 oz.	14 oz.*		
	4			4 oz.	6 oz.	8 oz.*	10 oz.
	5			STEP 1 FROTH 4 oz.	STEP 2 FROTH 4 oz.		
	6			6 oz.	8 oz.*	10 oz.	
<div><div> 4 oz.</div><div> 6 oz.</div><div> 8 oz.</div><div> 10 oz.</div><div> 12 oz.</div><div> 14 oz.</div><div> 16 oz.</div><div> CARAFE</div></div>							

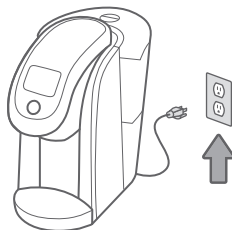
\* DEFAULT SIZE

# Before You Brew

## 1 Plug & Place

Remove packing tape from brewer and plug into a grounded outlet.

Place a large mug (12 oz. minimum) on the drip tray plate.

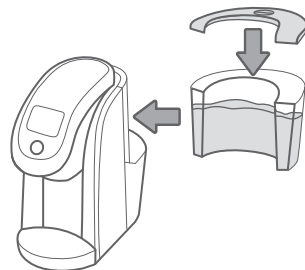


## 2 Rinse & Fill

Remove the water reservoir lid, then lift the reservoir straight up to remove it. Rinse reservoir with fresh water and fill to the MAX line.

Replace water reservoir, making sure the lock tabs engage with the brewer. Replace lid.

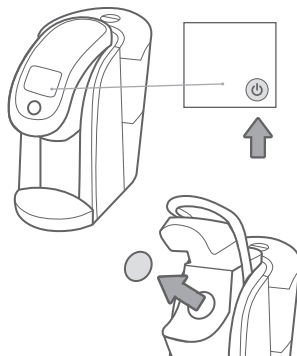
**NOTE:** Do not use distilled water.



## 3 Power On

Press the power button. Lift the handle—remove and discard the orange shipping disk.

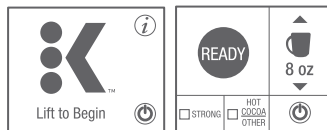
Lower the handle. Wait for preheating to complete, about 3 minutes.



## 4 Cleansing Brew Setup

Lift and lower the handle. Press the blinking brew button to start a cleansing brew. Pour the hot water into the sink.

**The one-time setup process is now complete and you are ready to brew!**



← BREW BUTTON

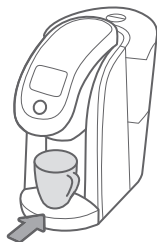
# Brew Your First K-Cup® Pod

## 5 Place Mug

Place a mug on the drip tray plate. If using a travel mug, remove the drip tray and place the mug on the drip tray base.

**Hot Water:** To dispense hot water into a mug, lift and lower the handle without inserting a K-Cup® pod. Select your cup size then press the blinking brew button to dispense hot water.

**NOTE:** Between brew cycles, the brewer may take about a minute to reheat.

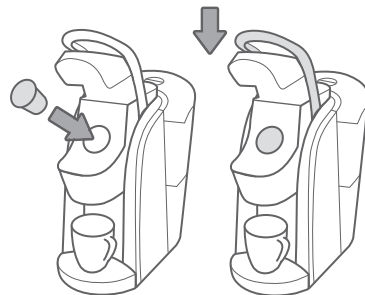


## 6 Lift & Insert

Lift the handle and place a K-Cup® pod in the K-Cup® pod holder.

Lower the handle completely to close the lid.

**Do not remove the foil lid on the K-Cup® pod.**

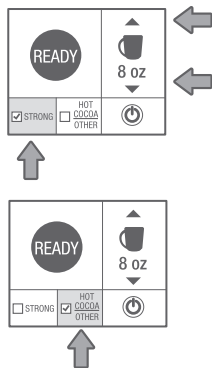


## 7 Size & Strength

Select your brew size using the arrows on the screen. Select **STRONG** if desired. (**STRONG** setting is for coffee.) Press **HOT COCOA/OTHER** for select non-coffee beverages.

**NOTE:** Make sure to check instructions on pod packaging.

**CAUTION:** There is extremely hot water in the K-Cup® pod during the brew process. To avoid injury, do not lift the handle during the brew process.

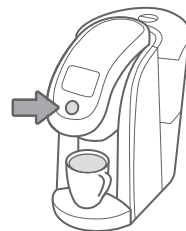


## 8 Brew & Enjoy

Press the blinking brew button. The button will remain illuminated while brewing, about 1 minute. The brewer will notify you when the brew cycle is complete.

Lift the handle and dispose of the used K-Cup® pod. The brewer will be ready to brew another cup in about a minute.

**NOTE:** To stop the brewing process, press and hold the power button for one second.



# Brew Your First K-Carafe® Pod

## 1 Place Carafe

Make sure the Keurig® Carafe is empty.

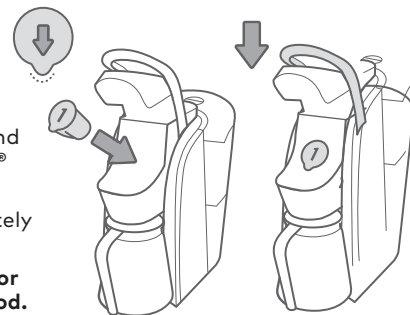
Remove the drip tray and insert the Keurig® Carafe securely in its place.



## 2 Lift & Insert

Lift the handle and place a K-Carafe® pod in the pod holder. Lower the handle completely to close the lid.

Do not remove the foil lid or puncture the K-Carafe® pod.

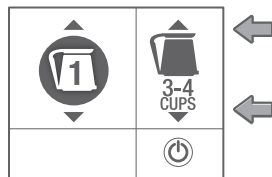


## 3 Select Brew Size

Select the KEURIG BREW setting that matches the number on the pod lid. Then select the number of desired cups.

**NOTE:** Make sure the number on the touch screen matches the number on the K-Carafe® pod in the pod holder.

**CAUTION:** There is extremely hot water in the K-Carafe® pod during the brew process. To avoid injury, do not lift the handle during the brew process.



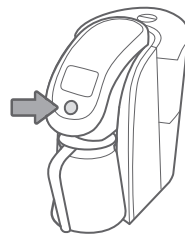
## 4 Brew & Enjoy

Press the blinking brew button. The button will remain illuminated while brewing.

The brewer will notify you when the brew cycle is complete.

Lift the handle and dispose of used K-Carafe® pod.

**NOTE:** To stop the brewing process, press and hold the power button for one second.



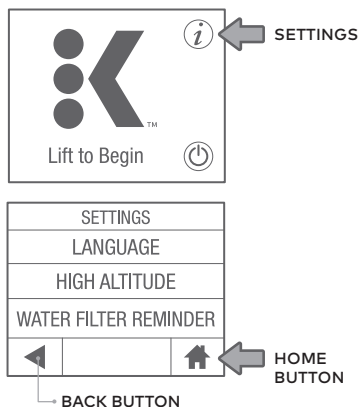
# Settings Menu

For all settings, press the **BACK** button to return to the settings menu or press the **HOME** button to return to the home screen. Your settings will be automatically saved.

## Access Settings

Explore everything your Keurig® Plus Series brewer has to offer by accessing the Settings Menu. From the home screen, select the settings button.

Use the arrows to scroll through the menu. To exit, press the **BACK** button or **HOME** button.



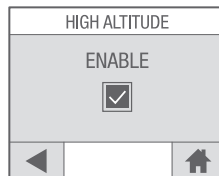
## Choose Language

Press English, Spanish, or French to select the language.



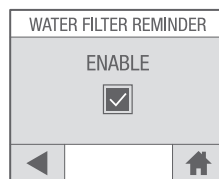
## High Altitude

To ensure your brewer works properly at higher altitudes (5,000 feet), **ENABLE** the high altitude mode.



## Water Filter Reminder

If you are using a Keurig® Water Filter, select **ENABLE** to activate the water filter reminder.



# Caring For Your Brewer

Regular cleaning keeps your brewer running smoothly. Always be sure to turn off and unplug your brewer before cleaning.

## Brewer Exterior

Keep your Keurig® brewer looking its best by cleaning the exterior from time to time. Just clean with a damp, soapy, lint-free, non-abrasive cloth. Never immerse the brewer in water or other liquids.

## Water Reservoir & Reservoir Lid

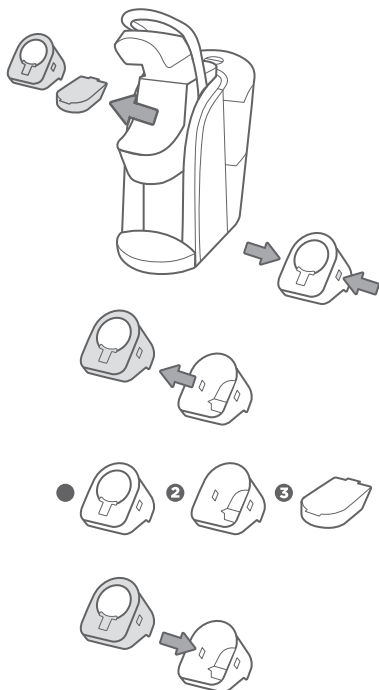
The water reservoir lid and water reservoir should be periodically cleaned with a damp, soapy, non-abrasive cloth and rinsed thoroughly. The water reservoir lid and water reservoir should not be put into the dishwasher. Do not dry the inside of the water reservoir with a cloth as lint may remain. If needed, repeat above procedures.

**CAUTION:** Please rinse the water reservoir thoroughly after cleaning. This will ensure that no cleaning solutions remain in this area as they may contaminate the water supply in the brewer.

## Pod Holder

Lift the handle. Push up while grabbing the sides of the pod holder assembly. Pull away from brewer. Pull out the pod holder assembly and base. Press the release buttons on both sides of the pod holder assembly. Separate the pod holder from the housing. Clean the pod holder (1), housing (2), and base (3) with a damp, soapy, lint-free, non-abrasive cloth and rinse thoroughly. After all pieces are cleaned, reassemble the pod holder assembly by inserting the pod holder back into the housing. Place the base, then the pod holder assembly into the brew head. Lower the handle.

**CAUTION:** Sharp needles. Do not put fingers in chamber.



## Drip Tray

The drip tray can hold up to 8 ounces of overflow and should be emptied and cleaned occasionally. To remove, slide it toward you, keeping it level to avoid spilling. Rinse and clean with a damp, soapy, lint-free, non-abrasive cloth.

## Cleaning Entrance Needles

Lift the brewer handle and locate the top entrance needles on the underside of the lid. To clean both holes in the needles, hold the brewer handle in the upward position and with your other hand, carefully insert a straightened paper clip into the holes. Gently move it around to loosen any coffee grounds. Lower the handle completely and run two water-only brew cycles. Do not insert a K-Cup® pod.

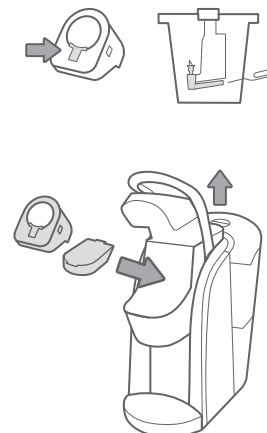
**TIP:** Refer to support.Keurig.com for video instructions on cleaning the entrance/exit needles.

**NOTE:** You can also use a Brewer Maintenance Accessory tool to clean the entrance needles. Reach out to Customer Service to get a Brewer Maintenance Accessory.

## Cleaning the Exit Needle

If a clog arises in the exit needle, push the lever of the pod holder to reveal the exit needle. Use a paper clip or similar tool to loosen the clog. Rinse thoroughly with hot water. After all the pieces are cleaned, place the base then the pod holder assembly into the brew head. Lower the handle.

**CAUTION:** Sharp needles. Do not put fingers in chamber.



# Troubleshooting

## Brewer Does Not Have Power or Shuts Off

- Press and hold the power button and ensure the touch screen is illuminated.
- Plug brewer into its own grounded outlet. If the electric circuit is overloaded with other appliances, your brewer may not function properly. The brewer should be operated on its own circuit, separate from other appliances.
- If the brewer still doesn't have power, contact Customer Service.

## Grounds in Your Coffee

Grounds may have gathered in the exit or entrance needles and can be cleaned using a straightened paper clip or similar tool.

- Clean the exit needle of the K-Cup® pod holder. Refer to the Exit Needle care instructions.
- Clean the brewer entrance needles. Refer to the Entrance Needles care instructions.

## Brewing a Partial Cup

- The exit needle may be clogged. Refer to the Exit Needle care instructions.
- The water reservoir may have been removed during brewing. Replace the water reservoir and perform a rinsing brew without a K-Cup® pod.
- The brewer may need to be descaled. If you have repeated the descale procedure on your brewer two times and it is still only brewing a partial cup, contact Customer Service.

## Brewer Will Not Brew

- After placing a pod in the pod holder, make sure the handle is lowered completely and the touch screen displays the appropriate brew screen. Follow the brewing instructions.
- If the touch screen indicates "More Water Please" add water to the water reservoir or make sure the water reservoir is seated properly in its base.
- If the touch screen indicates "More Water Please" even after refilling, remove the water reservoir and empty the water. Then thoroughly clean the reservoir. Fill the water reservoir to the MAX line, return it to the brewer and ensure it is seated properly in its base.
- The pod holder may need to be cleaned or the brewer may need to be descaled. Refer to Caring For Your Brewer for instructions.

## Touch Screen Alerts

- "More Water Please" – If the water level is not low, remove the water reservoir and empty the water. Clean the reservoir. Return the reservoir to the brewer and ensure it is seated properly in its base.
- "Sorry, Brew Interrupted" – Slowly lift the handle, remove the pod, lower the handle and perform a rinsing brew.
- "Sorry, There is a Problem" – Coffee grounds may be stuck in the entrance needle. Refer to Caring For Your Brewer for cleaning instructions.
- "Time To Replace the Keurig® Water Filter" – Your brewer will indicate that it is time to replace the water filter after every 1,000 ounces or two months. Once you've replaced the Keurig® Water Filter press YES to reset the water filter reminder.

# Recycling K-Mug® and K-Carafe® Pods

The plastic cups of K-Mug® and K-Carafe® pods can be recycled wherever #5 plastic is accepted. #5 plastic may not be recyclable in your community today, so please check locally with your municipality or waste hauler, or visit [KeurigRecycling.com](http://KeurigRecycling.com) for more information. #5 plastic is recyclable everywhere in Canada.



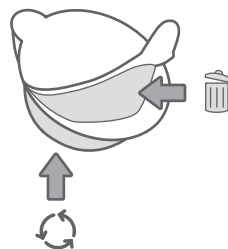
1

Once brewing is complete and pod is cool, separate the lid and filter from the cup. The filter will adhere to the lid.



2

Once separated, discard the lid and the attached filter. Recycle the plastic cup wherever #5 plastic is accepted.



# Descaling Your Brewer

You should descale your brewer every 3-6 months. Properly follow the descaling procedure.

Depending on the mineral content of your water, calcium deposits or scale may build up in your brewer. Scale is non-toxic but if left unattended can hinder brewer performance. Regularly descaling your brewer every 3-6 months helps maintain the heating element, and other internal parts that come in contact with water. Calcium deposits may build up faster, making it necessary to descale more often. You should promptly descale when the touch screen indicates "Time to descale the brewer!"



## Descaling Procedure

Before you begin, you will need a large ceramic mug, fresh water, Keurig® Descaling Solution, and access to a sink. Do not use a paper cup. Ensure that there is no beverage pod in the K-Cup® pod holder. Please allow approximately 45 minutes for the descaling procedure.

Empty the water from the water reservoir. If there is a Keurig® Water Filter, remove and set aside.

## STEP 1: Descaling Solution Rinse

Press and hold the power button to power the brewer off.

Pour the entire bottle of Keurig® Descaling Solution into an emptied water reservoir. Then fill the empty bottle with water and pour into the water reservoir. Press and hold the power button to turn the brewer back on.

Place a large mug on the drip tray and run a cleansing brew by lifting and lowering the handle, selecting the largest brew size and pressing the brew button.

## STEP 2: Descaling Rinse & Repeat

Repeat the rinsing brew process until the touch screen indicates "More Water Please". Do not use a K-Cup® pod. Let the brewer stand for at least 30 minutes while still on.

After 30 minutes, discard any residual solution from the water reservoir and rinse thoroughly.

## STEP 3: Fresh Water Rinse

Fill the water reservoir with fresh water to and not beyond the MAX line.

Place a large mug on the drip tray plate and run a rinsing brew using the largest brew size.

Do not use a K-Cup® pod. Pour the contents of the mug into the sink.

Repeat brew process until you have completed at least 12 rinsing brews. You may need to refill the water reservoir at least one time during this process.

**NOTE:** The cleaning action of Keurig® Descaling Solution may result in a "foam" dispensed from the brewer. This is natural, as the solution is reacting with the scale inside. For a brewer that is heavily scaled, the brewer may not fill properly after the descaler is added. If this occurs, you may see only a small or no output dispensed, followed by the sound of air blowing out. If this occurs:

- Turn off and unplug the brewer.
- If there is Keurig® descaling solution in the water reservoir, discard the contents, rinse the water reservoir thoroughly and refill with water.
- Plug the brewer back in, power on, and repeat the Step 3 Fresh Water Rinse cycle. The brewer should begin to function normally as the solution is rinsed out and the scale is removed. If problem persists, allow brewer to sit unplugged for at least 30 minutes before continuing with the rinse.

**NOTE:** If "Time to descale the brewer!" alert is still indicated on the touch screen, repeat the descaling procedure.

Fully experience the benefits that come with your new Keurig® brewer at

**KEURIG.COM/NEW**



## **REGISTER**

your new Keurig® brewer  
and receive a special  
savings offer



## **DISCOVER**

your favorite coffees with  
our **customized taste quiz** and  
get personalized recommendations