

**OWNER'S MANUAL**  
Keurig® K-Cup® K10 MINI Plus Brewer



KEURIG®

**K-CUP®**

Single Cup  
Brewing System

## IMPORTANT SAFEGUARDS Safe Operation & Use



When using electrical appliances, basic safety precautions should be followed, including the following:

1. Read all instructions before using.
2. Do not touch hot surfaces. Use handles and knobs when available.
3. This appliance must be properly installed and located in accordance with these instructions before it is used.
4. The use of accessory attachments not recommended by the appliance manufacturer may result in fire, electrical shock or injury to persons.
5. Do not place on or near a hot gas or electric burner, or in a heated oven.
6. Do not use outdoors.
7. To protect against fire, electric shock and injury do not immerse cords, plugs, or the appliance in water or any other liquid.
8. Do not overfill the Cold Water Reservoir with water.
9. Use **only water** in this appliance! Do not put any other liquids or foods in the Water Reservoir except as instructed in the Cleaning Instructions in this guide.
10. Turn off and unplug the brewer before cleaning or maintenance. Allow to cool before putting on or taking off parts and before cleaning the appliance.
11. For best operation, plug the appliance into its own electrical outlet on a dedicated circuit to prevent flickering of lights, blowing of fuses or tripping a circuit breaker.
12. Do not operate any appliance with a damaged cord or plug or after the appliance malfunctions or is damaged in any manner. Contact Keurig Customer Service to report any malfunction of or damage to the brewer.
13. Do not let the cord hang over the edge of the table or counter, or touch hot surfaces.
14. To disconnect, press the Power Button on the brewer to "OFF" status and then remove the plug from the wall outlet.
15. Close supervision is necessary when any appliance is used by or near children.
16. **Do not lift the brewer Handle while brewing is in progress; scalding may occur.**
17. Always keep the Cold Water Reservoir Lid closed unless you are refilling it.
18. This appliance is equipped with a power cord having a grounding wire with a grounding plug. The appliance must be grounded using a 3-hole properly grounded outlet. In the event of an electrical short circuit, grounding reduces the risk of electrical shock.
19. If the outlet is a standard 2-prong wall outlet, it is your personal responsibility and obligation to have it replaced with a properly grounded 3-prong wall outlet.
20. Do not, under any circumstances, cut or remove the third (ground) prong from the power cord or use an adapter.
21. Consult a qualified electrician if the grounding instructions are not completely understood, or if doubt exists as to whether the appliance is properly grounded.
22. Do not use the appliance for other than its intended use.

**SAVE THESE INSTRUCTIONS.**



**CAUTION:** There are two sharp needles that puncture the K-Cup® pack, one above the K-Cup® Pack Holder and the other in the bottom of the K-Cup® Pack Holder. To avoid risk of injury, do not put your fingers in the K-Cup® Pack Assembly Housing.

**CAUTION:** There is extremely hot water in the K-Cup® Pack Holder during the brew process. To avoid risk of injury, do not lift the Handle or open the K-Cup® Pack Assembly Housing during the brewing process.

**CAUTION:** Please always keep the brewer in its upright position to avoid potential injury and/or damage to your brewer.

**SHORT CORD INSTRUCTIONS:** A short power supply cord is provided to reduce the risk of becoming entangled in or tripping over a longer cord.

If an extension cord is used, (1) the marked electrical rating of the cord set or extension cord should be at least as great as the electrical rating of the appliance; (2) the cord should be arranged so that it will not drape over the countertop or tabletop where it can be pulled on by children or tripped over unintentionally; and (3) the extension cord must include a 3-prong grounding plug.

THIS PRODUCT IS FOR **HOUSEHOLD USE ONLY**.

**WARNING** KEEP ALL PLASTIC BAGS AWAY FROM CHILDREN.

**WARNING** THIS PRODUCT CONTAINS CHEMICALS, INCLUDING LEAD, WHICH IS KNOWN TO THE STATE OF CALIFORNIA TO CAUSE CANCER, BIRTH DEFECTS OR OTHER REPRODUCTIVE HARM.

**WARNING TO USERS AND PARENTS**

**1. DO NOT** permit children to use brewer unless there is adult supervision. Brewer dispenses very hot water.

**2. SPECIAL NOTICE FOR HOT COCOA USERS:**

**IMMEDIATELY AFTER USING A HOT COCOA K-CUP® PACK, RUN a Hot Water Brew Cycle** without a K-Cup® pack to avoid the possibility of clogging the exit needle. **DO NOT** assume the next user will do this.

 <p><b>WARNING</b> RISK OF FIRE OR ELECTRIC SHOCK <b>DO NOT OPEN</b></p>	 <p><b>WARNING:</b> TO REDUCE THE RISK OF FIRE OR ELECTRIC SHOCK, DO NOT REMOVE THE BOTTOM COVER. NO USER SERVICEABLE PARTS ARE INSIDE. REPAIR SHOULD BE DONE BY AUTHORIZED SERVICE PERSONNEL ONLY.</p>
---	--

# TABLE OF CONTENTS

KEURIG® GOURMET SINGLE CUP HOME BREWING SYSTEM  
K10 MINI Plus Brewer — Using Your Brewer

SECTION 1—Brewer Overview .....	4
SECTION 2—Helpful Hints .....	6
SECTION 3—Buttons & Indicators .....	7
SECTION 4—Set-Up & Operation	
Initial Cleansing & First Brew .....	8
SECTION 5—Cleaning & Maintenance	
Cleaning External Parts .....	12
Cleaning the K-Cup® Pack Holder Assembly .....	12
Cleaning the Cold Water Reservoir .....	14
Emptying the Internal Hot Water Tank .....	14
Descaling Your Brewer .....	14
Storage .....	15
Storing the Power Cord .....	15
SECTION 6—Troubleshooting .....	16
SECTION 7—Warranty .....	18

**Record your Brewer Serial Number here.**

Removing the serial number label from the brewer will void warranty.

## SECTION 1 Brewer Overview

- A** Water Level Guide
- B** Handle
- C** K-Cup® Pack Holder Assembly
- D** K-Cup® Pack Holder
- E** Funnel
- F** K-Cup® Pack Assembly Housing
- G** Drip Tray Overfill Indicator
- H** Drip Tray Plate
- I** Drip Tray
- J** Cold Water Reservoir Lid
- K** Cold Water Reservoir
- L** BREW Button
- M** LED Indicator
- N** Power Button
- O** Power Cord
- P** Drip Tray Base



For replacement parts, please visit [www.keurig.com](http://www.keurig.com)

## SECTION 2 Helpful Hints

### 1. Plug Power Cord into an independent, grounded outlet.

If the electric circuit is overloaded with other appliances, your brewer may not function properly.

### 2. Initial cleansing brew.

Before you make your first beverage, perform an initial cleansing brew without inserting a K-Cup® pack.

### 3. One cup at a time.

Your brewer makes one fresh beverage at a time. You will need to add fresh water each time you brew. Unlike other Keurig® brewers, the K10 MINI Plus does not store water in the reservoir.

### 4. The right water makes a difference.

For the best-tasting gourmet coffee, tea or hot cocoa, Keurig recommends using bottled or filtered water. We do not recommend using distilled or reverse osmosis water. Note that water quality can vary from place to place. If you notice an undesirable taste in your beverage (such as chlorine or other mineral substance), we recommend trying bottled water or water from a filtration system. For best results, carefully follow manufacturer's instructions when using any water filtration system.

### 5. Customize your size, flavor & brew.

With over 250 K-Cup® pack varieties and multiple fill levels, your brewer provides endless customization options – so that you

can create the size, flavor and strength of each beverage that is perfect for you. For a strong, intense flavor, select an Extra Bold K-Cup® pack (with up to 30% more ground coffee than regular varieties) along with a brew size that's right for you. The less water you use, the more intense the flavor in your cup. The more water you use, the less intense the flavor in your cup. Use the Water Level Guide located inside the Cold Water Reservoir to customize your brew size.

### 6. Brewing iced beverages.

Your iced tea and iced coffee taste best when fresh-brewed hot over ice. Try it by placing a tall cup filled with ice on the Drip Tray, choose your favorite K-Cup® pack and follow the brewing instructions on page 8. Also, look for the "Brew Over Ice" icon on K-Cup® packs specially crafted to brew over ice!

**IMPORTANT: Do not brew into a cup made of glass. Doing so may cause the glass to crack or break.**

### 7. Remove K-Cup® pack after use.

Please see page 8 for brewing instructions.

### 8. Brewing into a tall mug.

To brew into a tall mug, simply remove the Drip Tray Assembly and place the tall mug on the Drip Tray Base. Without the Drip Tray Assembly, however, you do lose the benefit of the Drip Tray to contain any excess liquid.

### 9. The Drip Tray.

Any liquid overflow (from your cup or from the Cold Water Reservoir) will be caught in the Drip Tray. Be sure to empty the Drip Tray when the red Drip Tray Overflow Indicator pops up.

### 10. Automatic shut-off.

As a safety feature, your brewer will shut off automatically when it is idle for longer than 90 seconds. Simply press the Power Button to restart.

### 11. Clean your brewer regularly.

To keep your brewer looking and performing at its best, be sure to clean the external and internal components on a regular basis. See page 12 for more information.

### 12. Descaling.

Depending on the mineral content of the water in your area, calcium deposits or scale may build up in your brewer. Scale is non-toxic, but left unattended, it can hinder brewer performance. Descaling your brewer helps maintain the heating element and other internal parts of the brewer that come in contact with water. See page 14 for more information.

### 13. Storing.

When storing your brewer, empty the Drip Tray. Follow the instructions on page 14 for emptying the Internal Hot Water Tank. Store your brewer upright in a safe, dry, frost-free environment. See page 15 for more information.

## SECTION 3 Buttons & Indicators



### Power Button (does not illuminate)

Press to turn the brewer power on and off.



### Add Water Indicator

**Flashing Blue** — Fill the Cold Water Reservoir with cold water until it reaches just under the rim of the desired level – 6, 8, or 10 oz. of the Water Level Guide.



### Handle Indicator

**Flashing Blue** — The blue light flashes when the minimum water amount of 6 oz. has been poured into the Cold Water Reservoir. After adding your desired amount of water (10 oz. maximum), lower the Cold Water Reservoir Lid. The light will continue to flash until you lift the Handle.



### Brew Button

**Flashing Blue** — Indicates you are ready to brew. Press the BREW Button.

**Flashing Red** — Indicates water is heating (approximately 2 minutes).

**Solid Red** — Indicates brewing and dispensing of beverage has begun.



### Your Next Brew

When the brewing process is complete, the Add Water Indicator light will appear. At this point you can begin making the next beverage, or you can power off.

### Automatic Shut-Off

As a safety feature, your brewer will automatically shut off at any stage when it is idle for longer than 90 seconds. Press the Power Button to restart. If the brewer shuts off while the BREW Button was flashing blue, lift and lower the Handle to reset.

### Drip Tray Overfill Indicator

A red float will appear when the Drip Tray is almost full. Carefully slide Drip Tray out and empty contents into the sink.



## SECTION 4 Set-Up & Operation

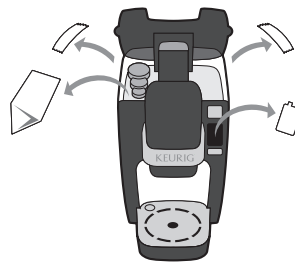
### Initial Cleansing & First Brew



**CAUTION:** Two sharp needles are used to puncture the K-Cup® packs. One is above the K-Cup® Pack Holder and the other is in the bottom of the K-Cup® Pack Holder. To avoid risk of injury, do not put your fingers inside the K-Cup® Pack Assembly Housing.



**CAUTION:** During the brewing process, the water gets extremely hot. To avoid risk of injury, do not lift the Handle or open the K-Cup® Pack Assembly Housing until brewing is complete.



Remove all tape and cardboard.

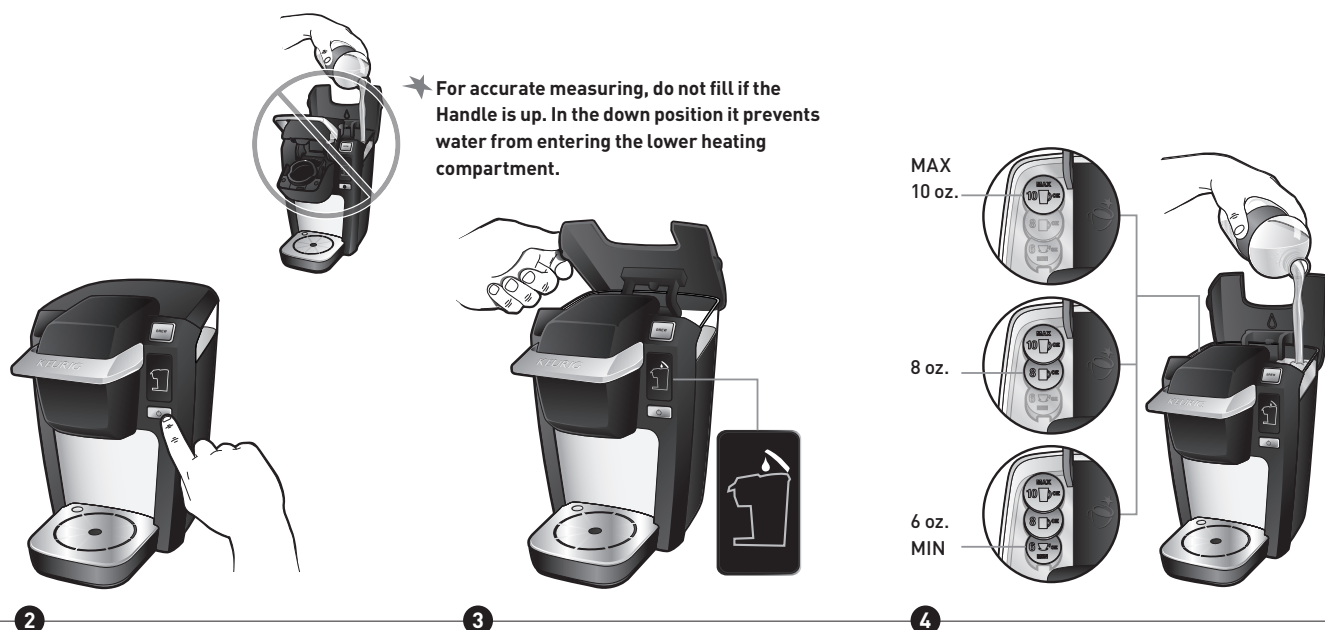


**1**

★ **Perform an initial cleansing brew before making your first beverage. Follow these instructions but do not insert a K-Cup® pack.**

Plug the Power Cord into an independent, grounded outlet.





2

Press the Power Button. The Add Water Indicator will flash blue.

★ **The Power Button does not illuminate.**

3

Lift the Cold Water Reservoir Lid.

4

Pour water anywhere within the Cold Water Reservoir until it reaches up to the rim of your desired fill level on the Water Level Guide (minimum of 6 oz.). Lower the lid.

★ **For accurate measuring, do not fill if the Handle is up.**

★ **Bottled or filtered water is recommended; distilled or reverse osmosis water is not.**

## SECTION 4 Set-Up & Operation (continued)



5 Sec

Let water fully drain into brewer before lowering the Handle.



**DO NOT** remove foil lid or puncture K-Cup® pack.



5

Lift the Handle. Water starts to drain from the Cold Water Reservoir into the brewer.

★ If you add more than 10 oz., excess water goes into the Drip Tray.



6

Place mug on the Drip Tray.

★ If you want to use a taller mug, you can slide the Drip Tray out, but you will lose the benefit of the tray to catch the excess water.



7

Insert the K-Cup® pack into the K-Cup® Pack Holder.

★ Do not add a K-Cup® pack if you are performing the initial cleansing brew.



8

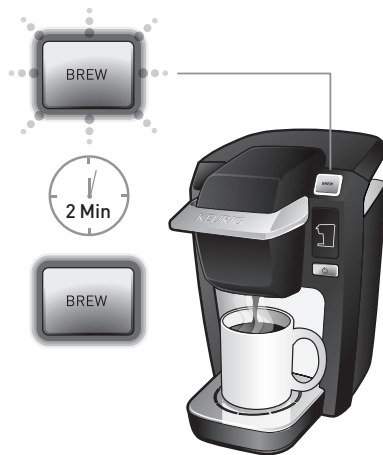
Wait until all water has drained (5 seconds) into the brewer before lowering the Handle completely.



9

The BREW Button will flash blue. Press the BREW Button.

**! CAUTION: Do not lift the Handle while brewing.**



10

The BREW Button will flash red to indicate that the water is heating. After about 2 minutes, the BREW Button will turn solid red when the beverage starts to dispense.

★ **Remove used K-Cup® pack after brewing.**  
**CAUTION: K-Cup® pack will be hot.**



11

Enjoy your beverage! Your brewer is ready to use again or you can power it off.

★ **As a safety feature, brewer automatically shuts off after 90 seconds.**

★ **If completing the initial cleansing brew, discard hot water into the sink. Your brewer is ready to use again.**

## SECTION 5 Cleaning & Maintenance

### Cleaning External Parts

**IMPORTANT:** Make sure the brewer is unplugged before cleaning.

Regular cleaning of the brewer's external components is recommended.

- Brewer external housing
- Drip Tray
- Drip Tray Plate

#### BREWER

- Never immerse brewer in water or other liquids.
- Clean the external housing of the brewer and other external components with a damp, non-abrasive, lint-free cloth.

#### DRIP TRAY AND DRIP TRAY PLATE

- When the red Drip Tray Overfill Indicator appears, the Drip Tray is almost full. Carefully remove by sliding tray toward you. Empty contents into the sink.
- Inspect the Drip Tray periodically and clean with a damp, non-abrasive, lint-free cloth.



Do not put the Drip Tray or the Drip Tray Plate in the dishwasher.

### Cleaning the K-Cup® Pack Holder Assembly

**IMPORTANT:** Make sure the brewer is unplugged before cleaning.

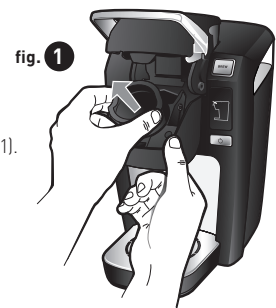
K-Cup® Pack Holder Assembly parts include:

- Funnel
- K-Cup® Pack Holder with Exit Needle

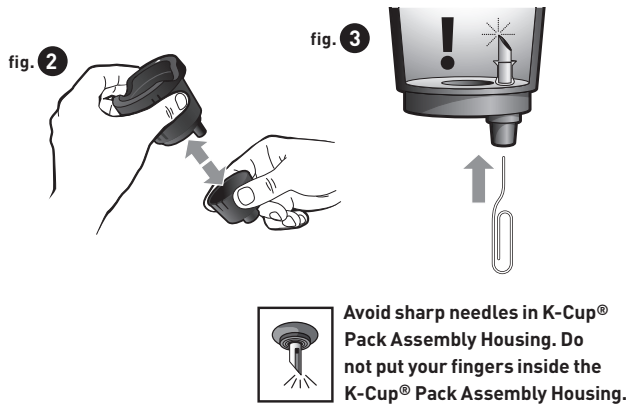


The K-Cup® Pack Holder Assembly parts can be placed on the top shelf of the dishwasher. Use a low temperature cycle when cleaning.

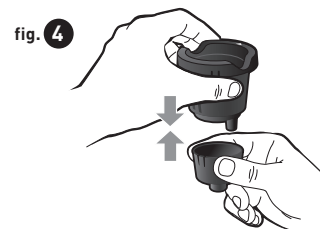
1. To remove the K-Cup® Pack Holder Assembly from the brewer, lift the Handle to open. Grasp the top of the K-Cup® Pack Holder with one hand. With the other hand, push up on the bottom of the K-Cup® Pack Holder Assembly until it releases (fig. 1).



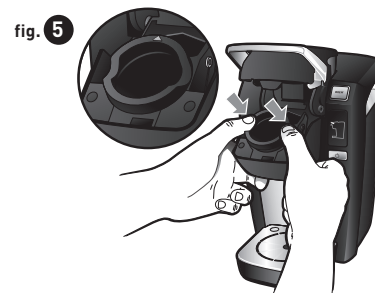
2. Separate the Funnel from the K-Cup® Pack Holder by pulling it until it snaps free (fig. 2).
3. Clean the Exit Needle on the bottom of the K-Cup® Pack Holder. Insert a paper clip (fig. 3) or similar tool from below if needle becomes clogged by coffee grinds.



4. To replace the Funnel, just snap it back into the K-Cup® Pack Holder (fig. 4).



5. To replace the K-Cup® Pack Holder Assembly, align the K-Cup® Pack Holder with the opening using the two front ribs as a guide and snap into place from the top (fig. 5).



## SECTION 5 Cleaning & Maintenance (continued)

### Cleaning the Cold Water Reservoir

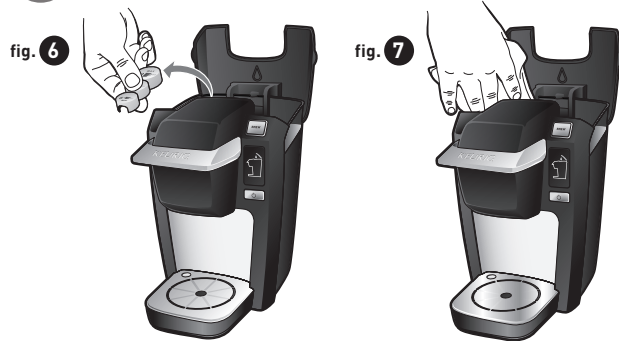
✦ It is normal over time for discoloration, spotting or staining to appear in the Cold Water Reservoir. Results will vary depending on the mineral content of the water used but will not affect the operation of the brewer. However, be sure to clean the Cold Water Reservoir regularly to minimize build-up.

To access the Cold Water Reservoir, lift the lid. Remove the Water Level Guide (fig. 6) and then clean inside the reservoir with a damp, non-abrasive lint-free cloth as necessary (fig. 7).

Replace the Water Level Guide and lower the lid when finished.



The Water Level Guide is not dishwasher safe.



### Emptying the Internal Hot Water Tank

Brewer must be powered off but plugged in.

- Lower the Cold Water Reservoir Lid.
- Place a mug on the Drip Tray.
- Press and hold down the BREW Button and continue to hold until all the water is dispensed into the mug.

✦ There will be a 3 to 5 second delay before water begins to dispense.

### Descaling Your Brewer

Depending on the mineral content of your water, calcium deposits or scale may build up in your brewer. Scale is non-toxic but if left unattended can hinder brewer performance. Regularly descaling your brewer every 3-6 months helps maintain the heating element, and other internal parts that come in contact with water. Calcium deposits may build up faster, making it necessary to descale more often. Properly follow the descaling procedure.

### Descaling Procedure

Before you begin, you will need a large ceramic mug, fresh water, descale solution and access to a sink. Do not use a paper cup.

#### STEP 1: FIRST DESCALING SOLUTION RINSE

- Turn on your brewer.
- Pour one third (4.6 oz.) of the Keurig™ Descaling Solution into the cold Water Reservoir then add fresh water to the 10 oz. fill level.
- Place a large ceramic mug on the Drip Tray Plate. Do not use a paper cup.
- Lift the Handle but do not add a K-Cup® pack.

- After 5 seconds, lower Handle and press the BREW button.
- Once solution is dispensed, discard hot contents into sink.

#### STEP 2: SECOND DESCALING SOLUTION RINSE

- Repeat above process up until you press the BREW button.
- When BREW button turns solid red, power off as it starts to dispense.
- Let brewer stand for at least 30 minutes.
- Power on the brewer, lift and lower Handle, then press BREW button.
- Discard the hot contents into sink.

#### STEP 3: FRESH WATER RINSE

- Repeat Step 1 (3 times) – using 10 oz. of fresh water each time.
- You may need to perform additional Fresh Water Rinse cycles if you notice any residual taste.

**NOTE:** The cleaning action of Keurig™ Descaling Solution may result in a foam dispensed from the brewer. This is natural, as the solution is reacting with the scale inside. For a brewer that is heavily scaled, the brewer may not fill properly after the descaler is added. If this occurs, you may see only a small or no output dispensed followed by the sound of air blowing out. If this occurs:

- Turn off and unplug the brewer.
- Plug the brewer back in, power on, and repeat the Step 3 Fresh Water Rinse cycle. The brewer should begin to function normally as the solution is rinsed out and the scale is removed. If problem persists, allow brewer to sit unplugged for at least 30 minutes before continuing with the rinse.

Visit us online for more information at [www.keurig.com/descaling](http://www.keurig.com/descaling).

## Storage

Empty the Internal Hot Water Tank and Cold Water Reservoir before storing. See page 14. Store your brewer in a safe, frost-free environment in an upright position.

✦ **Storing the brewer in cold temperatures may cause any residual condensation to freeze inside the brewer and could cause damage.**

Before using your brewer after storage, wipe the Cold Water Reservoir with a damp, non-abrasive lint-free cloth and run three (3) cleaning brews (without K-Cup® packs). See page 8 for initial cleansing brew process.

✦ **Let brewer rest at room temperature for at least 2 hours before powering on.**

## Storing the Power Cord

Behind the brewer is a convenient compartment to hold the Power Cord during transport or storage (fig. 8).



## Service

Beyond these recommended cleaning and maintenance procedures, this brewer is not user serviceable. See page 18 for warranty guidelines. For service, please refer to the Warranty section in this guide.

## SECTION 6 Troubleshooting

SITUATION	SOLUTION
<b>Brewer does not have power</b>	<ul style="list-style-type: none"> <li>• Make sure the Power Button has been pressed. The Add Water Indicator should flash blue after pushing the Power Button. Note that the Power Button does not illuminate.</li> <li>• During normal operation, the brewer will shut off when it is idle for longer than 90 seconds. Just press the Power Button to restart.</li> <li>• Plug brewer into an independent outlet.</li> <li>• Check to be sure that brewer is plugged in securely.</li> <li>• Plug into a different outlet.</li> <li>• Reset your home circuit breaker, if necessary.</li> <li>• If the brewer still does not operate, contact Customer Service.</li> </ul>
<b>BREW Button flashes red too long</b>	<ul style="list-style-type: none"> <li>• Under normal operation, the BREW Button will flash red when the brewer is heating and will turn solid red when brewing. If the BREW Button flashes red longer than 3 minutes, contact Customer Service.</li> </ul>
<b>Add Water Indicator does not flash blue</b>	<ul style="list-style-type: none"> <li>• If the Add Water Indicator does not flash blue, make sure the brewer has power (see above).</li> <li>• Water may be in the Cold Water Reservoir and brewer. First, try raising the Handle to drain all water from the Cold Water Reservoir into the brewer. If the light still does not flash, power off and place a mug on the Drip Tray. Hold down the BREW Button and continue to hold down until all the water is dispensed into the mug.</li> <li>• If the brewer still does not operate, contact Customer Service.</li> </ul>
<b>Brewer will not brew</b>	<ul style="list-style-type: none"> <li>• Make sure the brewer has power (see above).</li> <li>• If using reverse osmosis or distilled water, the brewer may not operate correctly. See page 14 for emptying the Internal Hot Water Tank and then use filtered or bottled water.</li> <li>• Press the Power Button. If the Add Water Indicator flashes blue, add water and attempt to brew. If the brewer loses power during the brew process, the brewer may need to be reset when power is restored. To reset, simply lift and lower the Handle.</li> <li>• Check that the minimum water level of 6 oz. has been poured into the Cold Water Reservoir.</li> </ul>



SITUATION	SOLUTION
<b>Brewer will not brew when used for the first time</b>	<ul style="list-style-type: none"> <li>• Brewer may be cold or frozen. Let brewer rest at room temperature for at least 2 hours before powering on.</li> <li>• Make sure the brewer has power (see previous page).</li> </ul>
<b>Brewer only brews a partial brew</b>	<ul style="list-style-type: none"> <li>• Allow enough time for water in the Cold Water Reservoir to drain completely into the brewer.</li> <li>• The Exit Needle may be clogged (see page 12).</li> <li>• Clean the K-Cup® Pack Assembly, if necessary (see page 12).</li> <li>• Descal the brewer (see page 14).</li> <li>• If you have repeated the descale procedure two times and the brewer still does not function properly, contact Customer Service.</li> </ul>
<b>Brewer shuts off automatically</b>	<ul style="list-style-type: none"> <li>• Under normal operation, the brewer will shut off when it is idle for longer than 90 seconds. Just press the Power Button to restart.</li> <li>• If the brewer shuts off in the middle of a brew (not from power outage), contact Customer Service.</li> </ul>
<b>There is water in the Drip Tray</b>	<ul style="list-style-type: none"> <li>• Remember that any liquid overflow (from your cup or the Cold Water Reservoir) will be caught in the Drip Tray.</li> <li>• When the Drip Tray is almost full, the red Drip Tray Overflow Indicator will appear. Carefully remove the Drip Tray and empty its contents into the sink.</li> </ul>
<b>Red Indicator appears in Drip Tray</b>	<ul style="list-style-type: none"> <li>• This means that the Drip Tray is almost full. Carefully remove the Drip Tray and empty its contents into the sink.</li> </ul>

**Should other issues arise with your brewer, please call  
Keurig Customer Service at 1.866.901.BREW (2739).**

## SECTION 7 Warranty

### Limited One Year Warranty

Keurig, Incorporated warrants that your brewer will be free of defects in materials or workmanship **under normal home** use for one year from the date of purchase. It is recommended that you fill out and return the warranty card enclosed with your brewer so that your purchase information will be stored in our system. Keurig will, at its option, repair or replace a defective brewer without charge upon its receipt of proof of the date of purchase. If a replacement brewer is necessary to service this warranty, the replacement brewer may be new or reconditioned. If a replacement brewer is sent, a new limited one year warranty will be applied to the replacement brewer.

This warranty only applies to brewers operated in the United States and Canada. This warranty gives you specific legal rights, and you may also have other rights that vary from state to state and, in the case of Canada, from province to province.

Only the use of Keurig Brewed® K-Cup® brand packs and accessories will guarantee the proper functioning and lifetime of your Keurig® brewer. Any damage to or malfunction of your brewer resulting from the use of non Keurig Brewed® K-Cup® brand packs and accessories may not be covered by this warranty or may result in a service fee if the damage or malfunction is determined to be caused by such use.

#### What is not covered by the limited warranty?

THIS WARRANTY DOES NOT COVER CONSEQUENTIAL OR INCIDENTAL DAMAGES SUCH AS PROPERTY DAMAGE AND DOES NOT COVER INCIDENTAL COSTS AND EXPENSES RESULTING FROM ANY BREACH OF THIS WARRANTY, EVEN IF FORESEEABLE. Some states or provinces do not allow the exclusion or limitations of incidental or consequential damages, so the above limitation or exclusion may not apply to you depending on the state or province of purchase.

Nor does this warranty cover damages caused by use of non Keurig Brewed® K-Cup® brand packs or accessories, services performed by anyone other than Keurig or its authorized service providers, use of parts other than genuine Keurig® parts, or external causes such as abuse, misuse, inappropriate power supply or acts of God.

#### Other limitations

THIS WARRANTY IS EXCLUSIVE AND IS IN LIEU OF ANY OTHER EXPRESS WARRANTY, WHETHER WRITTEN OR ORAL. IN ADDITION, KEURIG HEREBY SPECIFICALLY DISCLAIMS ALL OTHER WARRANTIES WITH RESPECT TO YOUR K10 MINI PLUS BREWER, INCLUDING ANY IMPLIED WARRANTY OF MERCHANTABILITY OR FITNESS FOR ANY PARTICULAR PURPOSE. Some states or provinces do not allow disclaimers of such implied warranties or limitations on how long an implied warranty lasts, so the above limitation may not apply to you depending on the state or the province of purchase.

#### How do you obtain warranty service?

Keurig® brewers are high-quality appliances and, with proper care, are intended to provide years of satisfying performance. However, should the need arise for warranty servicing, simply call Keurig Customer Service at our toll free phone number 1.866.901.BREW (2739). Please do not return your brewer for servicing without first speaking to Keurig Customer Service to obtain an Authorization to Return number (ATR). Keurig® brewers returned without an ATR number will be returned to the sender without servicing.

Keurig, Incorporated  
55 Walkers Brook Drive  
Reading, MA 01867  
1.866.901.BREW (2739)

### Scan. Click. Call!

Learn more and reach us quickly without leaving home.



### Scan here for videos about caring for your brewer!

Scan this QR code with your smartphone for step-by-step videos on cleaning, descaling and more. Or if you prefer, you can watch the videos on your computer at [bit.ly/NjTZ8W](http://bit.ly/NjTZ8W)



### Have questions? We're here to help!

Keurig is committed to your satisfaction. If you have questions, just give us a call to have them answered quickly without leaving the comfort of your home. **1.866.901.BREW (2739)**

To learn more about Keurig, visit [www.keurig.com](http://www.keurig.com) or call 1.866.901.BREW (2739)

Keurig, Incorporated  
55 Walkers Brook Drive  
Reading, MA 01867

Keurig, Incorporated is a wholly-owned  
subsidiary of Green Mountain Coffee Roasters, Inc.



For Household Use Only

Pat. [www.GMCR.com/patents](http://www.GMCR.com/patents)

© 2013 Keurig, Incorporated  
All rights reserved

P/N 60-202467-000 Rev B  
09/13